



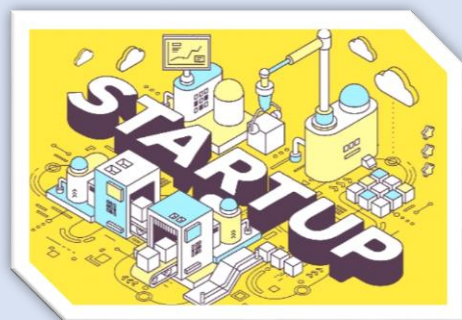
Start-up Cell

Bihar has emerged as a dynamic hub for entrepreneurial ventures, fostering innovation and economic growth in eastern India. The Bihar Start-up ecosystem aims to support aspiring entrepreneurs by providing resources, mentorship, and funding opportunities to transform their innovative ideas into successful business ventures. With government-led initiatives like the Bihar Start-up Policy and the Bihar Industrial Investment Promotion Scheme, the state is creating an enabling environment for Start-ups across various sectors, including technology, agriculture, health, and education.



In line with this mission, the **Bihar Start-up Cell at L.N. Mishra College of Business Management (LNMCBM)** plays a pivotal role in nurturing entrepreneurial talent and fostering a culture of innovation among students and young professionals.

The Start-up Cell is established with the collaboration of Start-up Bihar and funded by the Department of Industries, Govt. of Bihar. It serves as a catalyst for ideation, incubation, and business development, providing a collaborative platform for aspiring entrepreneurs.



The Cell offers comprehensive support through mentorship programs, networking events, and skill-building workshops. It aims to bridge the gap between academic learning and real-world entrepreneurial challenges by engaging industry experts and successful entrepreneurs as mentors. Additionally, the Bihar Start-up Cell at LNMCBM actively collaborates with government agencies, investors, and Start up accelerators to provide students with access to funding, legal assistance, and market expansion opportunities.

By cultivating an entrepreneurial mind set and facilitating the development of innovative solutions, the Bihar Start-up Cell at L.N. Mishra College of Business Management aspires to contribute to Bihar's economic development and position the state as a hub for impactful business ventures.

Key Facilities:

- **Co-working Space:**
A vibrant, fully-equipped workspace with high-speed internet and modern infrastructure to foster collaboration and creativity.
- **Idea Lab:**
A creative space where students can brainstorm, prototype, and develop innovative solutions with access to essential tools and technology.
- **Library & Research Resources:**
Access to a comprehensive collection of books, journals, and research materials on entrepreneurship, management, and innovation.

Support Services:

1. **Mentorship Programs:**
One-on-one mentorship sessions with industry experts, successful entrepreneurs, and faculty members to guide Start-ups through various stages of development.
2. **Funding Support:**
Assistance in securing seed funding, grants and investments from government schemes and private investors.
3. **Skill Development Workshops:**
Regular workshops on key business areas such as marketing, finance, legal compliance, and product development.
4. **Pitching Sessions:**
Opportunities to present business ideas to investors and potential partners for feedback and funding.
5. **Legal and Compliance Assistance:**
Support in navigating legal, financial, and regulatory frameworks for Start-ups.
6. **Market Access and Industry Linkages:**
Facilitating connections with industry partners and customers to explore market opportunities.
7. **Collaboration with Government Schemes:**
Guidance on availing benefits under the Bihar Start-up Policy and other government initiatives.
8. **Events and Hackathon:**
Annual Start-up events, hackathons, and competitions to promote innovation and collaboration.

For Information and Support:

Dr. Kishore Parth
(Faculty-In-Charge)

Start-up Cell LNMCBM

Phone: 9801532053

Email: drkishoreparth@gmail.com

Mr. Kunal Singh
(Co-ordinator)

Start-up Cell LNMCBM

Phone: 8002884215

Email: startupcell.lnmcmb@gmail.com